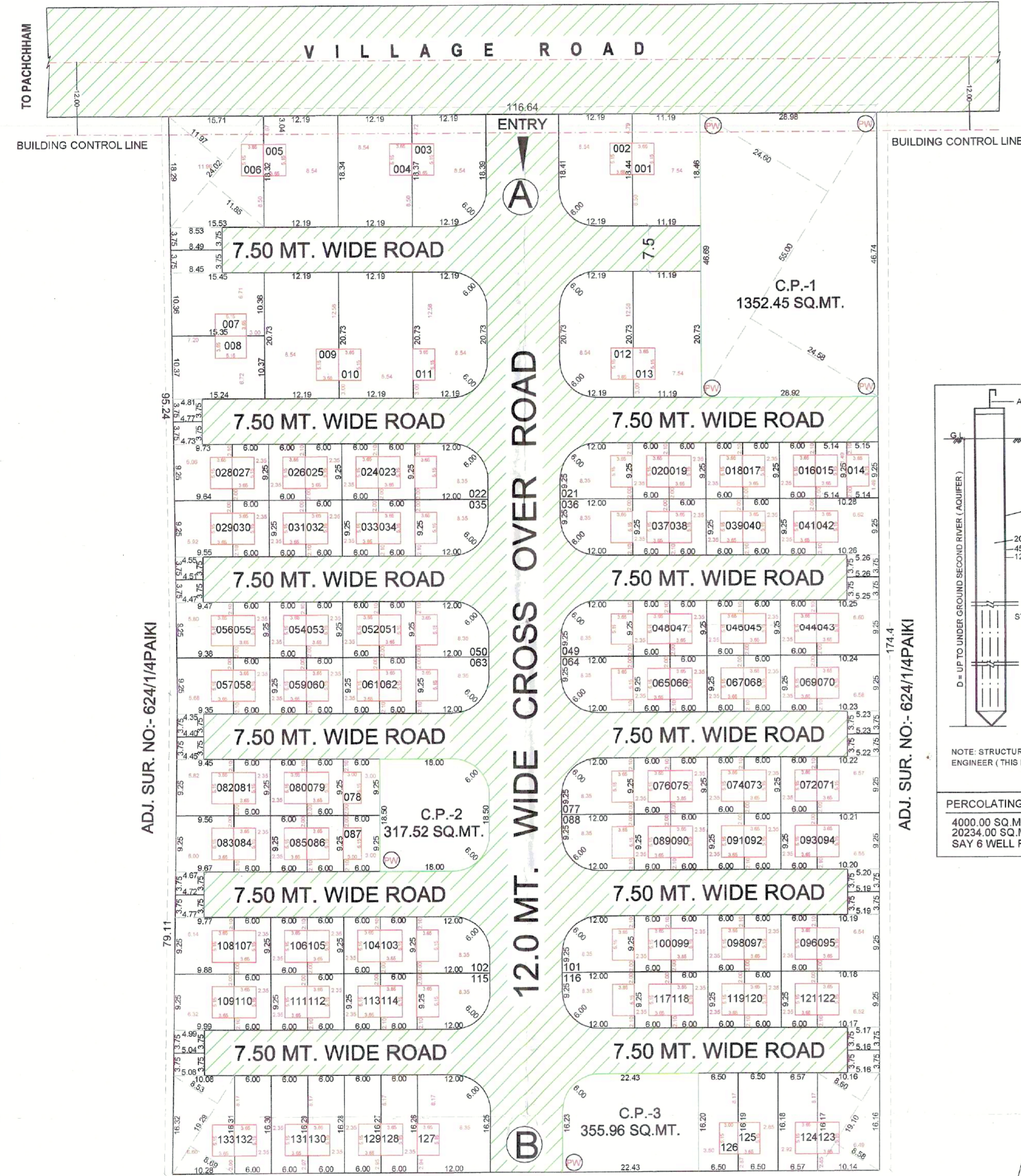


સવાલ વાળી જમીનના માલિક દ્વારા મેળવેલ પ્રવેશ અને નોંધ સહર જમીનના જમીન માલિક દ્વારા શરૂ કરીને આજના અવધાન અર્થે અથવા અથવા મેળવેલ હકો આપનાર અધિકારી દ્વારા જરૂર પડે ત્યાં સુધી વ્યાજબી રીતે સંબંધિત સમગ્ર અધિકારી દ્વારા કરવા માટે યોગ્ય જણાય તો જ આગળની કાર્યવાહી કરવાની રહેશે.

સવાલ વાળી જમીનના માલિકો રક્ત, હિસ્સા, જેને હકકદાવ અથવા વાદ-વિવાદ, અભ્યક્તિની લોકેશન, હકોના માધ્યમ, કોઈપણ તથા અન્ય તમામ પ્રદેશી વ્યાજબી રીતે સંબંધિત સમગ્ર અધિકારી દ્વારા કરવા માટે યોગ્ય જણાય તો જ આગળની કાર્યવાહી કરવાની રહેશે.

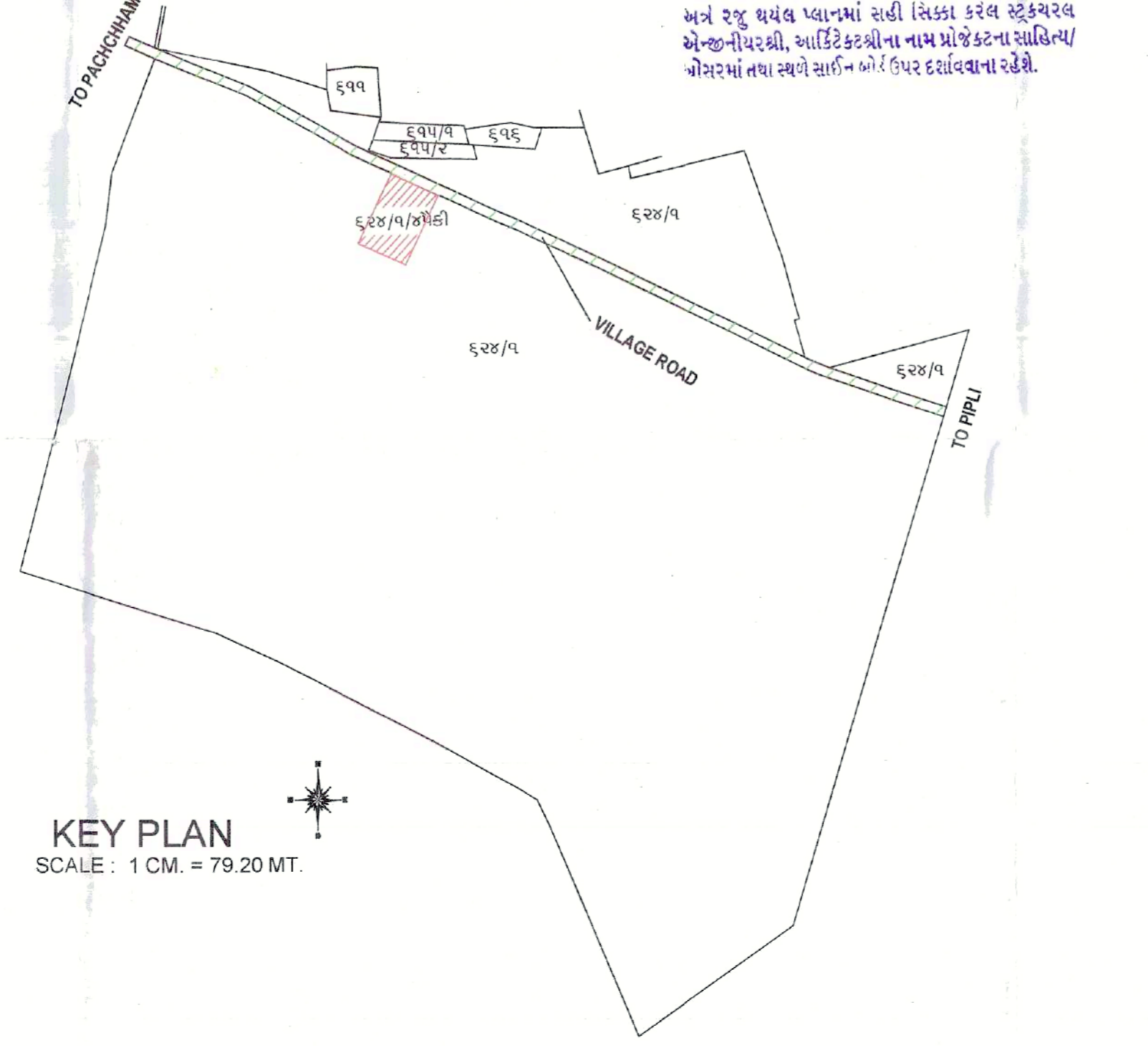
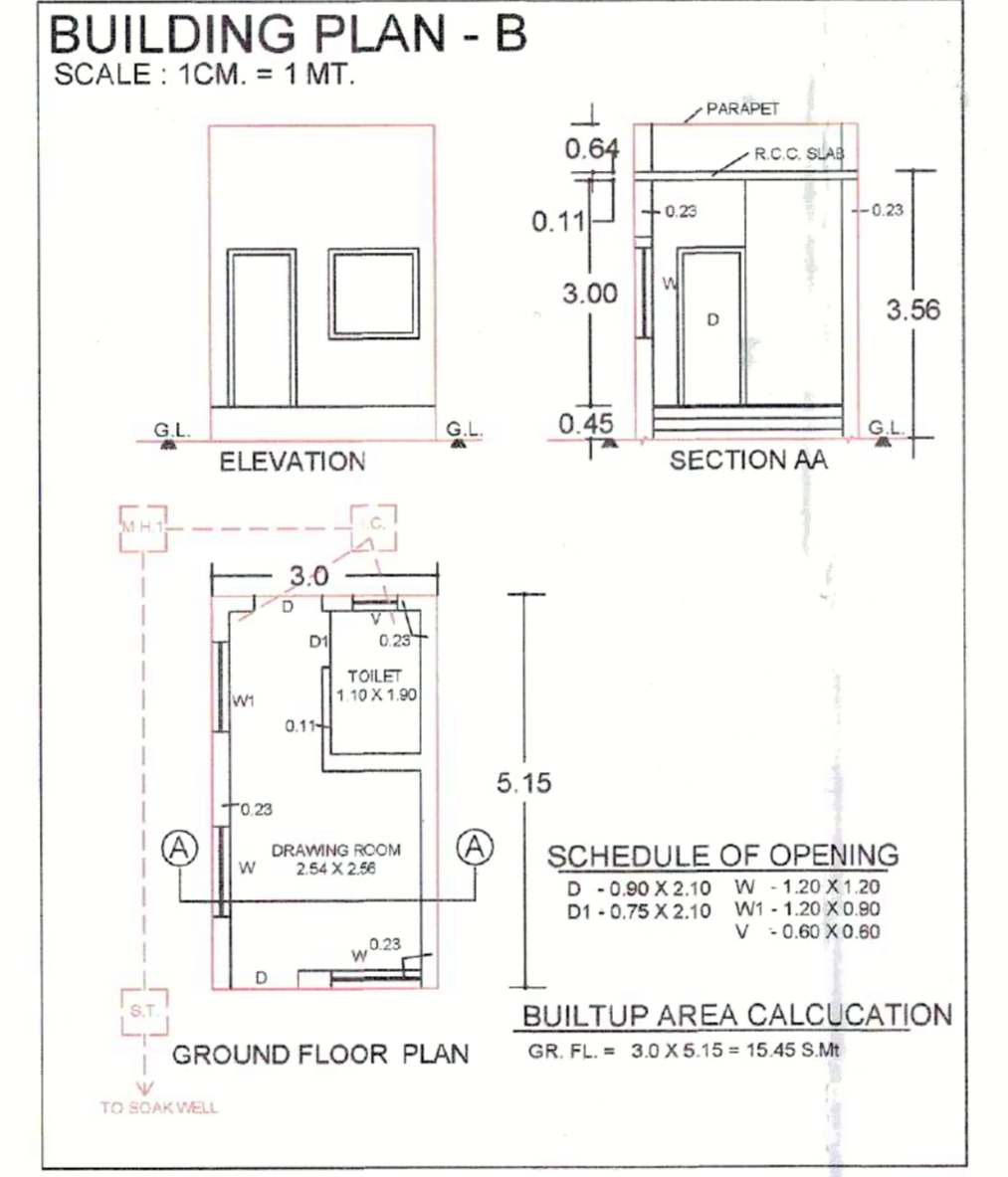
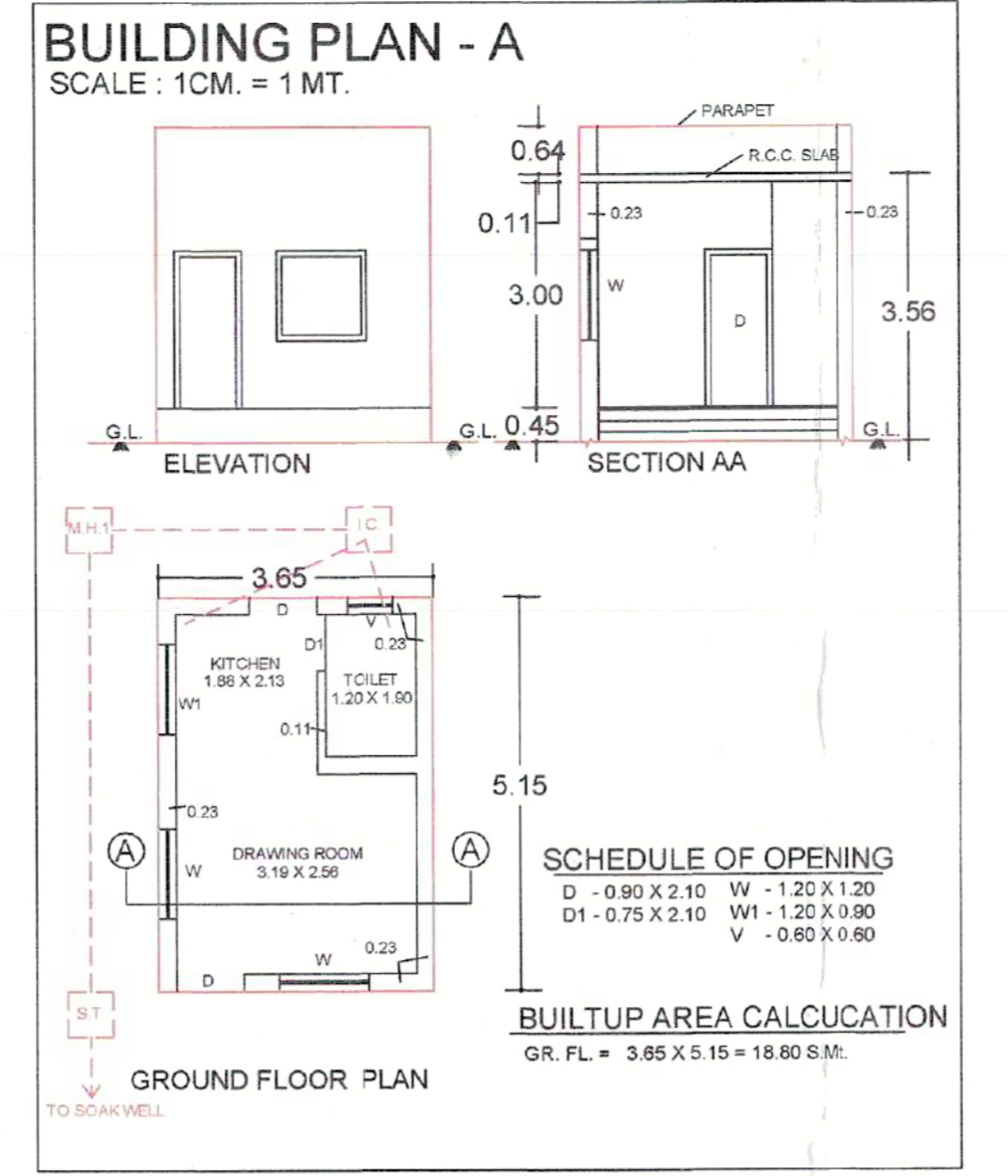
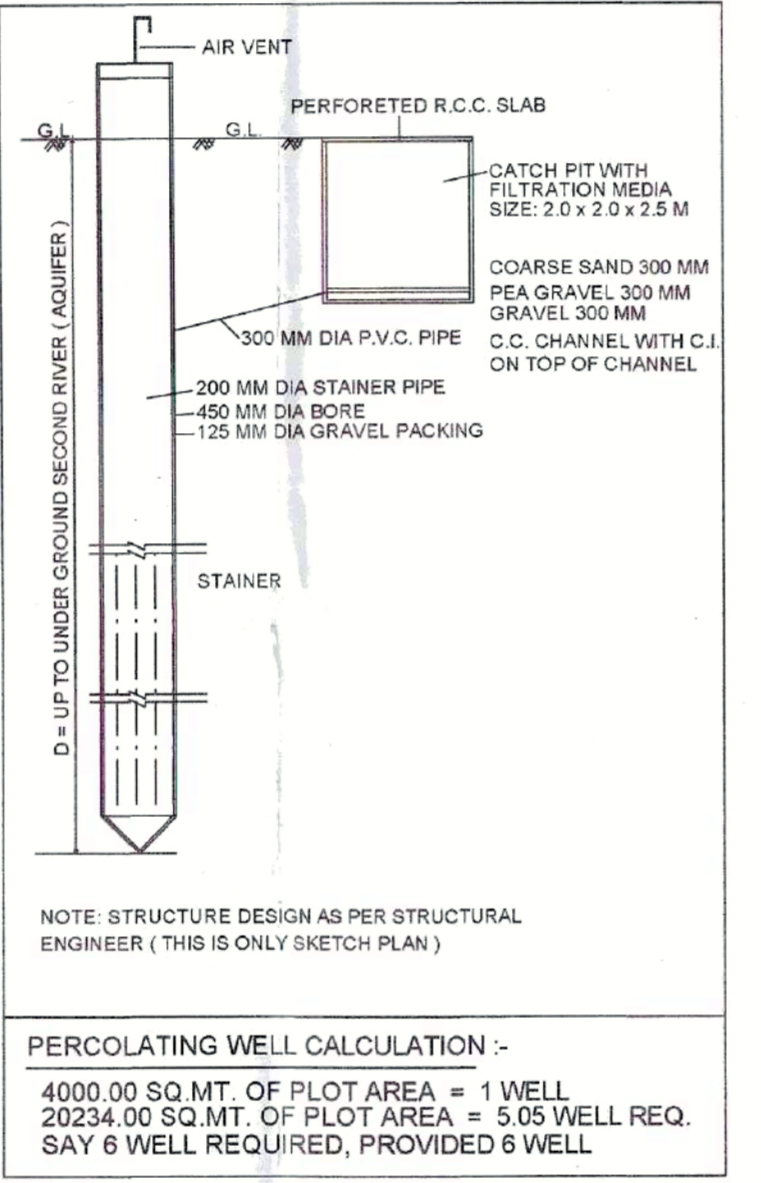


LAYOUT PLAN
SCALE: 1CM. = 5 MT.

KEY PLAN
SCALE: 1 CM. = 79.20 MT.

Owner is fully Responsible for Open Marginal Space D.P. OR T.P. Road, Allignment and Boundary of F.P. OR Sur. No. of the L.v.-01

NOTE:-
(1) A - B CROSS OVER ROAD
(2) ALL DIMENSION ARE IN METER
ABBREVIATION:-
(1) ADJ. = ADJACENT
(2) SUR. NO. = SURVEY NUMBER
(3) C.P. = COMMON PLOT



SUB PLOT AREA CALCULATION											
SUB PLOT NO.	(A)	SIZE (+B)	X C	X D	AREA	CURVE (-)	NET SUB PLOT AREA IN SQ.MT.	BUILDING TYPE	TOTAL BUILT UP / F.S.I. AREA	PER F.S.I. @ 1:1.2	BALANCE F.S.I.
001	18.46	18.44	0.50	11.19	206.46		206.46	A	18.80	247.75	228.85
002	18.44	18.41	0.50	12.19	224.60	7.74	216.86	A	18.80	260.23	241.43
003	18.39	18.37	0.50	12.19	224.05	7.74	216.31	A	18.80	259.57	240.77
004	18.37	18.34	0.50	12.19	223.75		223.75	A	18.80	268.50	249.70
005	18.34	18.32	0.50	12.19	223.44		223.44	A	18.80	268.13	249.33
006	11.67	11.85	0.50	24.02	286.08		317.99	A	18.80	381.59	362.79
007	8.53	8.49	0.50	3.75	31.91		19.31	A	18.80	229.57	210.77
008	8.49	8.45	0.50	3.75	31.76		17.67	A	18.80	211.89	193.09
009	15.45	15.35	0.50	10.36	159.54		252.70	A	18.80	303.24	284.44
010	15.35	15.24	0.50	10.37	158.61		252.70	A	18.80	303.24	284.44
011	12.19	12.19	0.50	20.73	252.70	15.48	237.22	A	18.80	284.66	265.86
012	12.19	12.19	0.50	20.73	252.70	15.48	237.22	A	18.80	284.66	265.86
013	11.19	11.20	0.50	23.17	231.97		231.97	A	18.80	278.38	259.58
014	5.15	5.14	0.50	9.25	47.59		47.59	A	18.80	57.11	38.31
015	5.14	5.14	0.50	9.25	47.55		47.55	A	18.80	57.05	38.25
016	6.00	6.00	0.25	55.50	55.50		55.50	A	18.80	66.60	47.80
017	6.00	6.00	0.25	55.50	55.50		55.50	A	18.80	66.60	47.80
018	6.00	6.00	0.25	55.50	55.50		55.50	A	18.80	66.60	47.80
019	6.00	6.00	0.25	55.50	55.50		55.50	A	18.80	66.60	47.80
020	6.00	6.00	0.25	55.50	55.50		55.50	A	18.80	66.60	47.80
021	12.00	12.00	0.25	111.00	7.74	103.26	A	18.80	123.91	105.11	
022	12.00	12.00	0.25	111.00	7.74	103.26	A	18.80	123.91	105.11	
023	6.00	6.00	0.25	55.50	55.50		55.50	A	18.80	66.60	47.80
024	6.00	6.00	0.25	55.50	55.50		55.50	A	18.80	66.60	47.80
025	6.00	6.00	0.25	55.50	55.50		55.50	A	18.80	66.60	47.80
026	6.00	6.00	0.25	55.50	55.50		55.50	A	18.80	66.60	47.80
027	6.00	6.00	0.25	55.50	55.50		55.50	A	18.80	66.60	47.80
028	9.73	9.64	0.50	9.25	89.59		107.40	A	18.80	128.89	110.08
029	4.77	4.73	0.50	3.75	17.81		105.74	A	18.80	126.89	108.09
030	9.64	9.55	0.50	9.25	88.75		55.50	A	18.80	66.60	47.80
031	4.55	4.51	0.50	3.75	16.99		55.50	A	18.80	66.60	47.80
032	6.00	6.00	0.25	55.50	55.50		55.50	A	18.80	66.60	47.80
033	6.00	6.00	0.25	55.50	55.50		55.50	A	18.80	66.60	47.80
034	6.00	6.00	0.25	55.50	55.50		55.50	A	18.80	66.60	47.80
035	12.00	12.00	0.25	111.00	7.74	103.26	A	18.80	123.91	105.11	
036	12.00	12.00	0.25	111.00	7.74	103.26	A	18.80	123.91	105.11	
037	6.00	6.00	0.25	55.50	55.50		55.50	A	18.80	66.60	47.80
038	6.00	6.00	0.25	55.50	55.50		55.50	A	18.80	66.60	47.80
039	6.00	6.00	0.25	55.50	55.50		55.50	A	18.80	66.60	47.80
040	6.00	6.00	0.25	55.50	55.50		55.50	A	18.80	66.60	47.80
041	6.00	6.00	0.25	55.50	55.50		55.50	A	18.80	66.60	47.80
042	10.28	10.26	0.50	9.25	95.00		114.72	A	18.80	137.67	118.87
043	5.26	5.26	0.50	3.75	19.73		114.47	A	18.80	137.37	118.57
044	10.25	10.24	0.50	9.25	94.77		55.50	A	18.80	66.60	47.80
045	5.26	5.25	0.50	3.75	19.71		55.50	A	18.80	66.60	47.80
046	6.00	6.00	0.25	55.50	55.50		55.50	A	18.80	66.60	47.80
047	6.00	6.00	0.25	55.50	55.50		55.50	A	18.80	66.60	47.80
048	6.00	6.00	0.25	55.50	55.50		55.50	A	18.80	66.60	47.80
049	12.00	12.00	0.25	111.00	7.74	103.26	A	18.80	123.91	105.11	
050	12.00	12.00	0.25	111.00	7.74	103.26	A	18.80	123.91	105.11	
051	6.00	6.00	0.25	55.50	55.50		55.50	A	18.80	66.60	47.80
052	6.00	6.00	0.25	55.50	55.50		55.50	A	18.80	66.60	47.80
053	6.00	6.00	0.25	55.50	55.50		55.50	A	18.80	66.60	47.80
054	6.00	6.00	0.25	55.50	55.50		55.50	A	18.80	66.60	47.80
055	6.00	6.00	0.25	55.50	55.50		55.50	A	18.80	66.60	47.80
056	9.47	9.38	0.50	9.25	87.18		104.02	A	18.80	124.82	106.02
057	4.51	4.47	0.50	3.75	18.84		103.03	A	18.80	123.64	104.84
058	9.38	9.35	0.50	9.25	86.83		55.50	A	18.80	66.60	47.80
059	4.35	4.40	0.50	3.75	18.41		55.50	A	18.80	66.60	47.80
060	6.00	6.00	0.25	55.50	55.50		55.50	A	18.80	66.60	47.80
061	6.00	6.00	0.25	55.50	55.50		55.50	A	18.80	66.60	47.80
062	6.00	6.00	0.25	55.50	55.50		55.50	A	18.80	66.60	47.80
063	12.00	12.00	0.25	111.00	7.74	103.26	A	18.80	123.91	105.11	
064	12.00	12.00	0.25	111.00	7.74	103.26	A	18.80	123.91	105.11	
065	6.00	6.00	0.25	55.50	55.50		55.50	A	18.80	66.60	47.80
066	6.00	6.00	0.25	55.50	55.50		55.50	A	18.80	66.60	47.80
067	6.00	6.00	0.25	55.50	55.50		55.50	A	18.80	66.60	47.80
068	6.00	6.00	0.25	55.50	55.50		55.50	A	18.80	66.60	47.80
069	6.00	6.00	0.25	55.50	55.50		55.50	A	18.80	66.60	47.80
070	10.24	10.23	0.50	9.25	94.67		114.29	A	18.80	137.14	118.34
071	5.23	5.23	0.50	3.75	19.61		55.50	A	18.80	66.60	47.80
072	10.22	10.21	0.50	9.25	94.49		55.50	A	18.80	66.60	47.80
073	5.23	5.22	0.50	3.75	19.59		55.50	A	18.80	66.60	47.80
074	6.00	6.00	0.25	55.50	55.50		55.50	A	18.80	66.60	47.80
075	6.00	6.00	0.25	55.50	55.50		55.50	A	18.80	66.60	47.80
TOTAL							7225.46		1410.00	8670.55	7260.55

SUB PLOT AREA CALCULATION											
SUB PLOT NO.	(A)	SIZE (+B)	X C	X D	AREA	CURVE (-)	NET SUB PLOT AREA IN SQ.MT.	BUILDING TYPE	TOTAL BUILT UP / F.S.I. AREA	PER F.S.I. @ 1:1.2	BALANCE F.S.I.
076	6.00	6.00	0.25	55.50	55.50		55.50	A	18.80	66.60	47.80
077	6.00	6.00	0.25	55.50	55.50		55.50	A	18.80	66.60	47.80
078	6.00	6.00	0.25	55.50	55.50		55.50	A	18.80	66.60	47.80
079	6.00	6.00	0.25	55.50	55.50		55.50	A	18.80	66.60	47.80
080	6.00	6.00	0.25	55.50	55.50		55.50	A	18.80	66.60	47.80
081	6.00	6.00	0.25	55.50	55.50		55.50	A	18.80	66.60	47.80
082	9.45	9.56	0.50	9.25	87.92		104.52	A	18.80	125.42	106.62
083	4.40	4.45	0.50	3.75	16.59		108.55	A	18.80	127.85	109.05
084	9.56	9.67	0.50	9.25	88.94		55.50	A	18.80	66.60	47.80
085	4.67	4.72	0.50	3.75	17.61		55.50	A	18.80	66.60	47.80
086	6.00	6.00	0.25	55.50	55.50		55.50	A	18.80	66.60	47.80
087	6.00	6.00	0.25	55.50	55.50		55.50	A	18.80	66.60	47.80
088	6.00	6.00	0.25	55.50	55.50		55.50	A	18.80	66.60	47.80
089	12.00	12.00	0.25	111.00	7.74	103.26	A	18.80	123.91	105.11	
090	6.00	6.00	0.25	55.50	55.50		55.50	A	18.80	66.60	47.80
091	6.00	6.00	0.25	55.50	55.50		55.50	A	18.80	66.60	47.80
092	6.00	6.00	0.25	55.50	55.50		55.50	A	18.80	66.60	47.80
093	6.00	6.00	0.25	55.50	55.50		55.50	A	18.80	66.60	47.80
094	10.21	10.20	0.50	9.25	94.40		113.67	A	18.80	136.41	117.61
095	5.20	5.19	0.50	3.75	19.48</						